

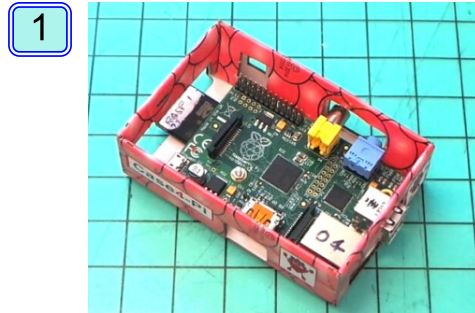
Case4-Pi (Model B version)

Making instructions for the Case4-Pi to fit **Raspberry Pi model B** only

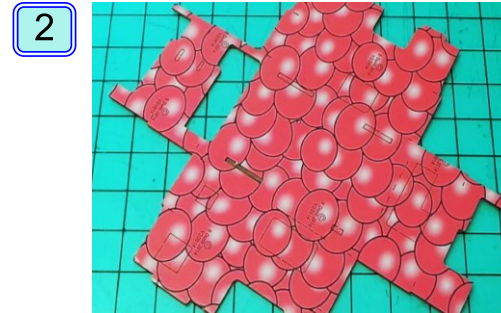
Images taken from our YouTube video

Equipment Needed

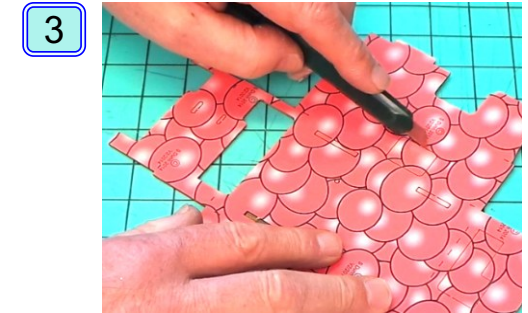
- (1) **Case4-Pi kit (B version)**
- (2) **Ball point pen** (preferable thin point type)
- (3) **Clear adhesive tape** (12mm wide is easiest to use)
- (4) **Rule** (30cm long is ideal)
- (5) **Cutting board** (to protect table) (or work on used paper)
- (6) **Knife** or use the **pen point** to remove the 'push out parts'.



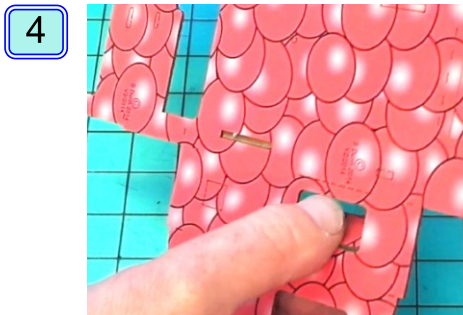
This is how it will look when finished. (without a **Case4-Lid**)



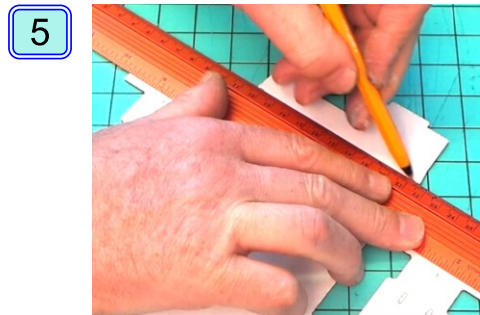
Collect **Case4-Pi B** version sheet and the nut and bolt needed later.



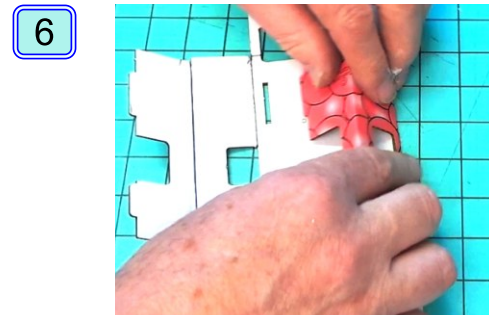
Prepare to remove the 'push out parts'. Use knife or pen to help remove the 'pips' holding it in place.



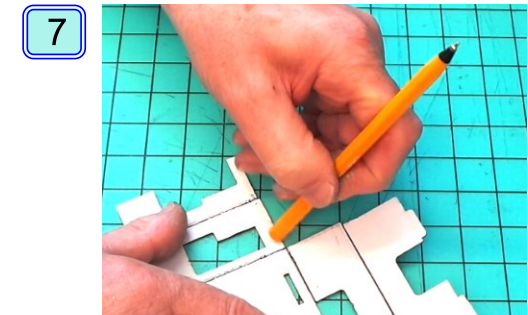
Remove the 'push out parts'



Score along the bend lines. Use the **marks provided** to line up the rule before scoring.



Fold the lines just scored right over.



Bevel corner edges (the edges that meet up when the box is folded up)



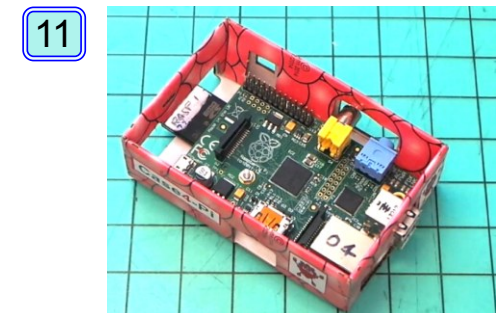
Start **taping** corners. on one side, ensure corners meet well. Ask an adult helper if needed.



Finish **taping** corners so it looks like this.



Bolt Raspberry Pi in the **Case4-Pi** (the pen points to the 'nut and bolt' position)



You are now ready to use it. Start by adding your **SD card**.